

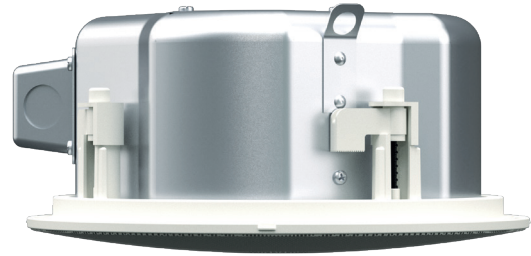
ACS-55TS

Compact Two-Way Ceiling Speaker – Shallow

ADORN

Features

- Compact two-way ceiling speaker, shallow backcan
- 5.25" (135mm) LF driver and 0.75" (19mm) HF dome tweeter
- Wide 150° conical coverage pattern reduces speaker count required for even coverage
- 70V/100V multi-tap line transformer or 16-ohm low-impedance operation
- Low and high-frequency overload protection
- UL94V-0 rated baffle with zinc-plated steel backcan
- Quick release, bezel-less grille
- Tile rails and C-ring included
- 5-year warranty



Applications

- Retail outlets
- Cafes, bars and restaurants
- Museums and Houses of Worship
- Hotels, casinos and concourses
- Transportation facilities
- Boardrooms and reception areas



As part of the ADORN commercial loudspeaker series, the ACS-55TS is a compact, two-way ceiling speaker designed for background and foreground applications that require premium performance and cost competitiveness. It brings full-frequency response, consistent coverage and intelligibility to a wide range of architectural environments — from hotels and concourses to retail outlets, bars and restaurants.

Comprising a 5.25" (135mm) LF driver and a 0.75" (19mm) silk-dome tweeter, the ACS-55TS produces 113dB peak output at 1 metre and has a high-fidelity sonic character ideal for both music and speech reproduction. Its ported design delivers strong bass that extends down to 79Hz.

The wide 150° conical coverage of the ACS-55TS makes it particularly suitable for low ceilings and reduces the number of speakers required for even coverage — leading to a reduction in installation cost. It features a shallow backcan for installation in ceilings with a minimum cavity depth.

It incorporates a high-quality transformer for 70V/100V line operation, with transformer taps selected by a rotary switch accessible behind the powder-coated, perforated steel grille. The switch also provides for 16-ohm low impedance operation — enabling four or more speakers to be driven in parallel from a single amplifier channel. For full-bandwidth protection, the low and high-frequency sections are individually protected against overload by auto-resetting thermal fuses.

The grille is bezel-less for a clean look, its bayonet fitting is easy to remove without the use of tools and finished in white (RAL9016) to match ADORN on-wall loudspeakers and may also be painted to blend with any décor.

Martin Audio Ltd
Century Point, Halifax Road, High Wycombe
Buckinghamshire HP12 3SL, England

Telephone: +44 (0) 1494 535 312
Facsimile: +44 (0) 1494 438 669
Email: info@martin-audio.com

All information is Copyright © 2020 Martin Audio Ltd.



www.martin-audio.com

ACS-55TS

Compact Two-Way Ceiling Speaker – Shallow

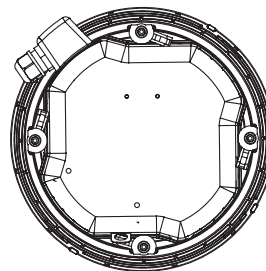


Technical Specifications

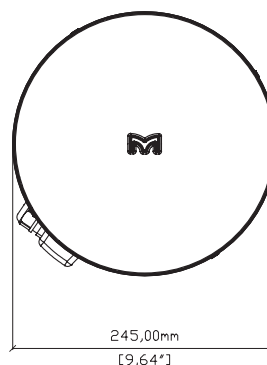
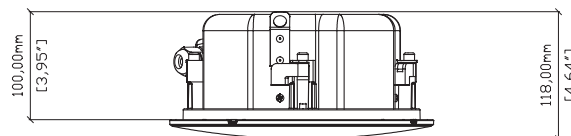
TYPE	Compact, passive two-way ceiling speaker, ported bass reflex
FREQUENCY RESPONSE (1)	117Hz-20kHz ± 3dB -10dB @ 79Hz
DRIVERS	LF: 5.25" /1" high-temp voice coil, coated paper cone, rubber surround, ferrite motor, pressed steel chassis HF: 0.75" silk dome, neodymium motor
RATED POWER (2)	50W AES, 200W peak
RECOMMENDED AMPLIFIER	VIA2004 (for low-impedance operation)
SENSITIVITY (4)	90dB / 1W(4V) / 1m
MAXIMUM SPL (9)	113dB peak
NOMINAL IMPEDANCE	16 ohms
DISPERSION (-6dB)	150° conical up to 7kHz
CROSSOVER	3kHz passive (LF and HF auto-resetting fuses)
TRANSFORMER TAPS	70V: 30w / 15w / 7.5w / 3.75w 100V: 30w / 15w / 7.5w
RECOMMENDED HIGH-PASS FILTER	65Hz 24dB/oct
ENCLOSURE	UL 94V-0 rated ABS baffle with steel backcan
FINISH	Baffle and grille: RAL9016 white Backcan: zinc plated
GRILLE	Perforated steel, powder-coated, bayonet fitting
CONNECTORS	Ceramic connector (in and link) located behind fire-retardant steel cover
ACCESSORIES (included)	2 tile rails C-ring backing plate Cut-out template
DIMENSIONS	(OD) 245mm x (D) Back Can 100mm, (D) Inc. Grille 118mm (OD) 9.7in x (D) Back Can 3.95in, (D) Inc. Grille 4.65in
HOLE CUT-OUT DIMENSION	222mm (8.74") diameter
WEIGHT	2.8kg (6.2lbs)

Notes

- (1) Measured on-axis in half (2pi) space at 2 metres, then referred to 1 metre.
- (2) AES Standard ANSI S4.26-1984.
- (3) Measured in half (2pi) space at 2 metres with 1 watt input, using band limited pink noise, then referred to 1 metre.
- (4) Measured in half (2pi) space at 2 metres using band limited pink noise, then referred to 1 metre.
- (5) Measured on-axis in open (4pi) space at 2 metres, then referred to 1 metre.
- (6) Measured in open (4pi) space at 2 metres with 1 watt input, using band limited pink noise, then referred to 1 metre.
- (7) Measured in open (4pi) space at 2 metres using band limited pink noise, then referred to 1 metre.
- (8) Measured in open (4pi) space at 2 metres with 2.83v input, using band limited pink noise, then referred to 1 metre.
- (9) Calculated at 1 metre.
- (10) Measured in half (2pi) space at 2 metres with 2.83V input, using band limited pink noise, then referred to 1 metre.



ACS-55TS



Martin Audio Ltd
Century Point, Halifax Road, High Wycombe
Buckinghamshire HP12 3SL, England

Telephone: +44 (0) 1494 535 312
Facsimile: +44 (0) 1494 438 669
Email: info@martin-audio.com

All information is Copyright © 2020 Martin Audio Ltd.



www.martin-audio.com